

# Key Investor Information

This document provides you with key investor information about this fund. It is not marketing material. The information is required by law to help you understand the nature and the risks of investing in this fund. You are advised to read it so you can make an informed decision about whether to invest.

## Franklin U.S. Opportunities Fund

**Class A (Ydis) EUR • ISIN LU0260861751** • A sub-fund of Franklin Templeton Investment Funds

*The management company is Franklin Templeton International Services S.à r.l.*

### Objectives and Investment Policy

Franklin U.S. Opportunities Fund (the “Fund”) is classified as Article 8 under EU Sustainable Finance Disclosure Regulation and aims to increase the value of its investments over the medium to long term.

The Fund pursues an actively managed investment strategy and invests mainly in:

- equity securities issued by companies of any size located in, or doing significant business in, the U.S.

The Fund can invest to a lesser extent in:

- securities issued by private companies and Private Investments in Public Equity and special purpose acquisition companies (each limited to 5% of the Fund's assets)

The investment team focuses on high-quality companies that it believes have exceptional potential for fast and sustainable growth.

The benchmarks are used for performance comparison purposes. The Russell 3000 Growth Index is considered the Fund's primary benchmark because it consists of growth securities, which is aligned with the investment

manager's focus on growth securities in managing the Fund. The performance of the S&P 500 Index may also be provided because it is considered a proxy for the US equity market. While the Investment manager is unconstrained in the active management of the Fund and has absolute discretion to invest in companies not included in the benchmarks, the Fund's performance may, from time to time, present close similarities to these benchmarks.

You may request the sale of your shares on any Dealing Day (as defined in the current prospectus of the Fund).

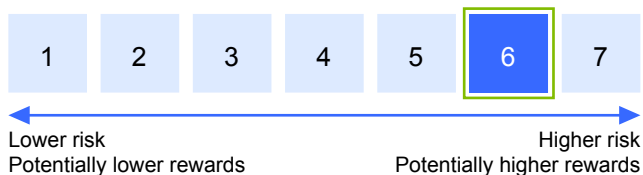
For the distribution share class shown in this document, dividend income is distributed to shareholders.

For further information on the Objectives and Investment Policy of the Fund, please refer to the section “Fund Information, Objectives and Investment Policies” of the current prospectus of Franklin Templeton Investment Funds.

### Terms to Understand

**Equity securities:** Securities that represent an ownership stake in a company.

### Risk and Reward Profile



#### What does this indicator mean and what are its limits?

This indicator is designed to provide you with a measure of the price movement of this share class based on historical behavior.

Historical data may not be a reliable indication of the future risk profile of the Fund. The category shown is not guaranteed to remain unchanged and may shift over time.

The lowest category does not mean risk free.

#### Why is the Fund in this specific category?

The Fund invests mainly in equity securities of companies located in or doing significant business in the U.S. Such securities have historically been subject to significant price movements that may occur suddenly due to market or company-specific factors. As a result, the performance of the Fund can fluctuate significantly over relatively short time periods.

#### Risks materially relevant not adequately captured by the indicator:

**Liquidity risk:** the risk that arises when adverse market conditions affect the ability to sell assets when necessary. Such risk may be triggered by (but not limited to) unexpected events such as environmental disasters or pandemics. Reduced liquidity may have a negative impact on the price of the assets.

**Securities Lending risk:** the risk that default or insolvency of the borrower of securities lent by a Fund may lead to losses if collateral received realises less than the values of securities lent.

For a full discussion of all the risks applicable to this Fund, please refer to the “Risk Considerations” section of the current prospectus of Franklin Templeton Investment Funds.

## Charges

The charges you pay are used to pay the costs of running the Fund, including the costs of marketing and distributing it. These charges reduce the potential growth of your investment.

### One-off charges taken before or after you invest

Entry charge	5.75%
Exit charge	Not applicable

*This is the maximum that might be taken out of your money before it is invested.*

### Charges taken from the Fund over a year

Ongoing charges	1.81%
-----------------	-------

### Charges taken from the Fund under certain specific conditions

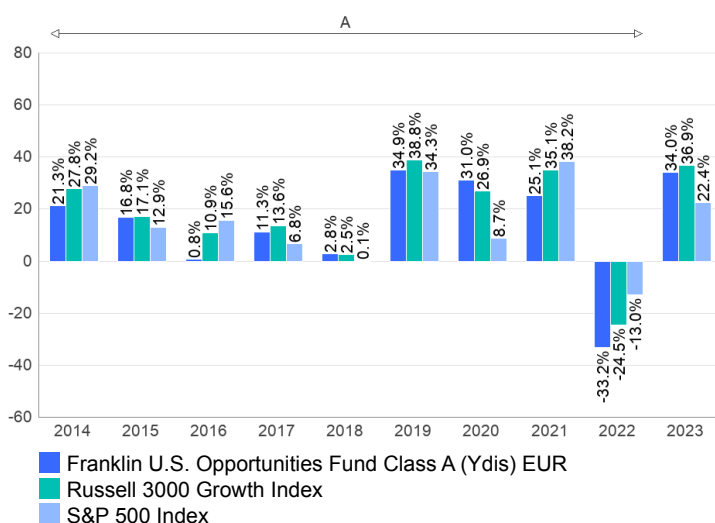
Performance fee	Not applicable
-----------------	----------------

The entry charges shown are maximum amounts; you may pay less in some cases. For more information, please see your financial adviser.

The ongoing charges are based on the expenses for the year ending 31 December 2023. This figure may vary from year to year.

For detailed information about charges, please refer to the sections "Share Classes" and/or "Performance Fees" (as applicable) as well as Appendix E of the current prospectus of Franklin Templeton Investment Funds.

## Past Performance



A: The performance was achieved under circumstances that no longer apply.

- Past performance is not a guide to future performance.
- The past performance shown here includes all the ongoing charges but not the entry charge.
- Past performance is calculated in the currency of the present share class.
- The Fund was launched in 2000 and the present share class on 01/09/2006.
- Product performance is not tracking the index.
- Benchmark performance is provided for information and indicative purposes only.

## Practical Information

- The Custodian of Franklin Templeton Investment Funds is J.P. Morgan SE, Luxembourg Branch.
- Copies of the latest prospectus and the latest annual and semi-annual reports of Franklin Templeton Investment Funds are available in the language of this document, on the website [www.ftdocuments.com](http://www.ftdocuments.com) or may be obtained free of charge from Franklin Templeton International Services S.à r.l., 8A, rue Albert Borschette, L-1246 Luxembourg or your financial adviser.
- The latest prices and other information on the Fund (including other share classes of the Fund) are available from Franklin Templeton International Services S.à r.l., 8A, rue Albert Borschette, L-1246 Luxembourg. [www.fundinfo.com](http://www.fundinfo.com) or [www.franklintempleton.lu](http://www.franklintempleton.lu).
- Please note that the taxation regime applicable in the Grand Duchy of Luxembourg may have an impact on your personal tax position. Please consult your financial or tax adviser before deciding to invest.
- Franklin Templeton International Services S.à r.l. may be held liable solely on the basis of any statement contained in this document that is misleading, inaccurate or inconsistent with the relevant parts of the prospectus of the Fund.
- The present Fund is a sub-fund of Franklin Templeton Investment Funds. The prospectus and the financial reports refer to all sub-funds of Franklin Templeton Investment Funds. All sub-funds of Franklin Templeton Investment Funds have segregated assets and liabilities. As a result, each sub-fund is operated independently from each other.
- You may switch into shares of another sub-fund of Franklin Templeton Investment Funds as further described in the prospectus.
- The details of the up-to-date remuneration policy, including, but not limited to, a description of how remuneration and benefits are calculated, the identity of persons responsible for awarding the remuneration and benefits including the composition of the remuneration committee are available at [www.franklintempleton.lu](http://www.franklintempleton.lu) and a paper copy can be obtained free of charge.